

THE ROCKAWAY

CUT BY: THOMAS
MODEL: ZEB



1. Prepare the hair using **Wise Up Shampoo** from Bed Head for Men.



2A. Apply **Pure Texture Molding Paste** as a cutting agent.



2B.



3. Take a radial part from ear to ear across the crown.



4A. Utilizing the razor reshape the baseline horizontally at a low elevation from the back to the sides.



4B.



5. In front of the ear continue rounding up the cut to complete the perimeter.



6. While keeping the radial division in place take a center vertical section from the crown to the nape.



7A. Comb and elevate the hair 90° to the occipital bone, remove the corner of weight squarely to the head shape using point cutting.



7B.



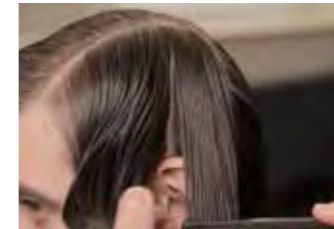
8. Continue with pivoting sections and work consistently until the ear level.



9A. Note the hand and body position and repeat the same technique on the opposite side of the head.



9B.



10A. In front of the ear continue with pivoting sections. Over direct each section slightly back to maintain length in the frontal area.



10B.



10C.



11A. On the larger opposite side -to keep the balance- raise the elevation slightly higher and work squarely to the round of the head.



11B.



12. To remove additional weight use controlled slicing from the mid lengths towards the ends.



13A. Before the styling apply **Slick Trick Pomade** to the hair. Blow-dry the hair off the face with the hands and a small paddle brush.



13B.



13C.



13D.

